



CONTRIBUTION TO THE **WRIGHT** FEDERAL ELECTORATE 2020

DIRECT CONTRIBUTION



PROVIDING

385 JOBS

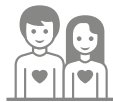
IN EDUCATION AND
SOCIAL SERVICES DELIVERY



BENEFITING

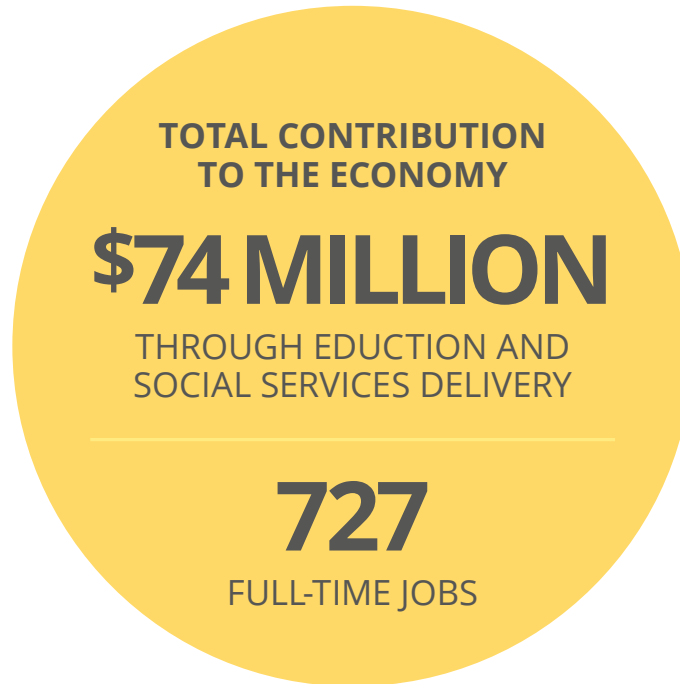
491

LOCAL BUSINESSES



397

VOLUNTEERS



FLOW-ON BENEFITS

FROM OUR SERVICES
AND EMPLOYMENT



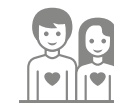
342

ADDITIONAL FULL-TIME JOBS



\$36 MILLION

ADDITIONAL VALUE ADD



\$1,245,000

VALUE OF VOLUNTEERING

Nurturing prosperity in the local community

3,649 students in Brisbane Catholic Education Schools • **1,045** children in Catholic Early EdCare

For more detailed information on the Archdiocese of Brisbane, [click here](#).