



## ARCHDIOCESE OF BRISBANE CONTRIBUTION 2025

### DIRECT CONTRIBUTION



**\$1.2 BILLION**

IN WAGES PAID TO



**12,994 JOBS**

IN EDUCATION AND  
SOCIAL SERVICES DELIVERY



**\$570 MILLION**

GOODS AND SERVICES  
PURCHASED



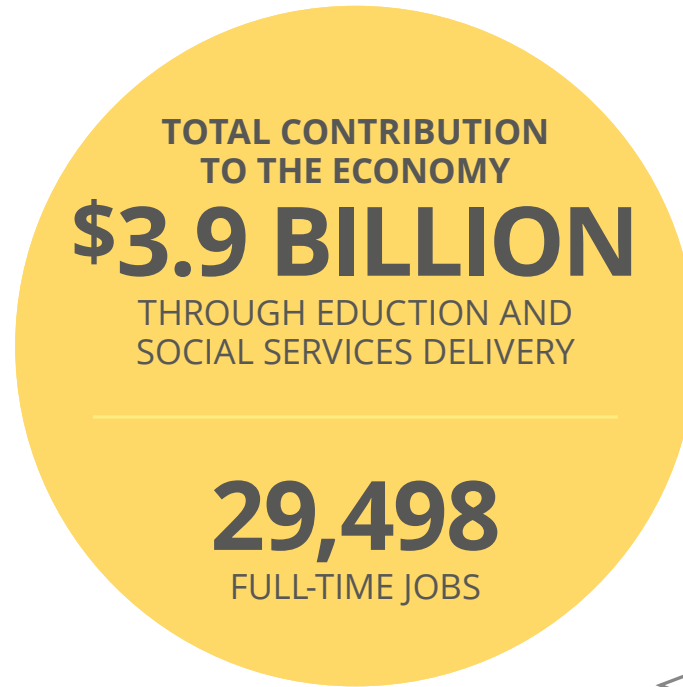
**11,805**

BUSINESSES BENEFIT



**\$1.8 BILLION**

TOTAL DIRECT SPEND



### FLOW-ON BENEFITS FROM OUR SPENDING AND EMPLOYMENT



**16,504**

ADDITIONAL FULL-TIME JOBS



**\$1.7 BILLION**

ADDITIONAL VALUE ADD



**15,443**

VOLUNTEERS

**\$400 MILLION**

VALUE OF VOLUNTEERING



**\$798 MILLION**

VALUE OF EDUCATION COST SAVINGS

## Nurturing prosperity in Queensland communities

94 parishes • 146 Brisbane Catholic Education Schools

190 Catholic Early EdCare and Centacare age care, disability and family and relationship service locations

For more detailed information on the Archdiocese of Brisbane, [click here](#).